



Certificate of Analysis

UElandy Inc.

Room 302, Building 1, No.18& Chunyao Road,

Xiangcheng District, Suzhou,

Jiangsu Province P.R, 215143 China

www.uelandy.com

Refer to website for regional contact information.

Product Name:	UE Blood Genomic DNA Miniprep Kit	Lot ID:	220822KC3
Catalog Number:	UE-MN-BL-GDNA-250	Expiration Date:	8/21/2025

Quality Control

Spectrophotometric Analysis

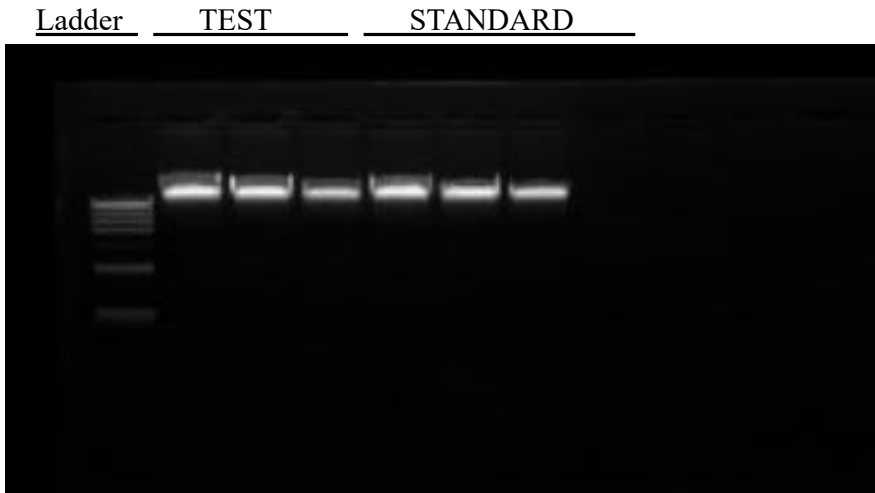
- Acceptable Range for $A_{260}/A_{280}=1.8\pm0.15$.
- Comparison of the Test Sample to a previously tested Standard. Acceptable range for Test Sample is $\leq \pm 10\%$ of Standard, based upon spectrophotometric analysis. The "Standard" is a previously tested and validated sample.

Electrophoretic Analysis

- Agarose gel electrophoresis of the samples exhibits a tight genomic DNA band without significant visible degradation.
- Agarose gel electrophoresis of the samples exhibits no contaminating RNA.

Gel Image and Test Data

Item	Test Date						Sample
	1	2	3	4	5	6	
A_{260}	0.2304	0.2394	0.1846	0.2163	0.2416	0.1864	1,2,3 are duplicate Test Samples 4,5,6 are duplicate Standards
A_{280}	0.1208	0.1247	0.0966	0.1136	0.1244	0.0981	
A_{260}/A_{280}	1.9075	1.9191	1.9104	1.9048	1.9423	1.9007	
Yield (μg)	5.7597	5.9850	4.6150	5.4082	5.0400	4.6600	
Electrophoresis	√	√	√	√	√	√	PASS
No visible RNA	√	√	√	√	√	√	
Endonuclease digest	√	√	√	√	√	√	
[Test Sample/Standard] Yield Difference	1.56%						PASS



UElandy Inc. warrants and represents that all inspections and testing for the article described above have been performed at UElandy Inc. QC laboratory located on-site at the manufacturing plant. UElandy Inc. manufacturing facility is located at Room 302, Building 1, No.18& Chunyao Road, Xiangcheng District, Suzhou, Jiangsu Province P.R, 215143 China

(QC Inspector) *tian qin zheng*

(Approver) *Qin Hua-Yu*